

KY-Moms MATR Clients Give Birth to Healthy Babies

The KY-Moms MATR case management program is part of the Governor's Office of Early Childhood's Kentucky Invests in Developing Success NOW (KIDS NOW) and is administered by the Division of Behavioral Health in the Department for Behavioral Health, Developmental and Intellectual Disabilities; KY-Moms MATR (502) 564-4456/ (800) 374-9146







Babies born to KY-Moms MATR clients are at risk for negative birth outcomes

The overall goal of KY-Moms: Maternal Assistance Towards Recovery (MATR) is to increase positive birth outcomes for high risk pregnant women in Kentucky by reducing inter-related risks for substance abuse, mental health problems, and partner abuse and violence, which could potentially have a negative impact on the health of the pregnant mother, fetal development, and birth outcomes.

Birth outcomes were similar to the general population of mothers^a

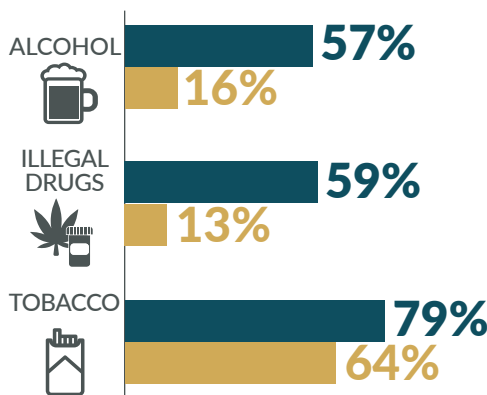
Even with risk factors for negative birth outcomes before coming into the program (including alcohol and illegal drug use, high rates of smoking, depression or anxiety symptoms, and intimate partner abuse), KY-Moms program participant birth outcomes were very positive overall, similar to the general population.

	 AVERAGE GESTATIONAL AGE	 AVERAGE BIRTH WEIGHT	 AVERAGE APGAR SCORE	 AVERAGE NUMBER OF PRENATAL VISITS
KY-Moms MATR	38.2 weeks	7lbs, 4oz	8.8	11.7
General Population	38.3 weeks	7lbs, 3oz	8.8	11.7

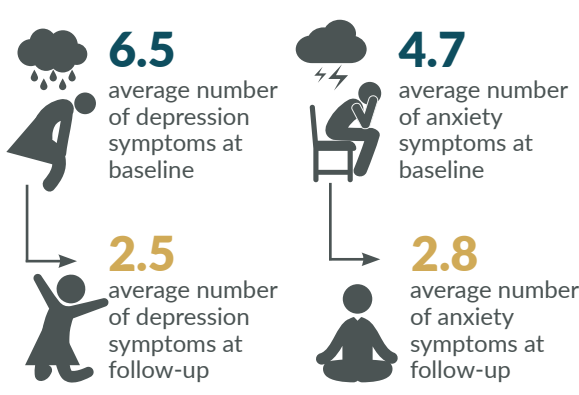
^a Each birth outcome was entered as the dependent variable in a separate binary logistic regression model with KIDS NOW Plus participation as the predictor variable and the covariates of mother's age, education (i.e., high school diploma or higher), area of residence (metropolitan vs. non-metropolitan county), marital status, and smoking at the time of the birth. The alpha level was set at $p < .01$.

Compared to baseline, clients' risk factors significantly improved at postnatal follow-up^b

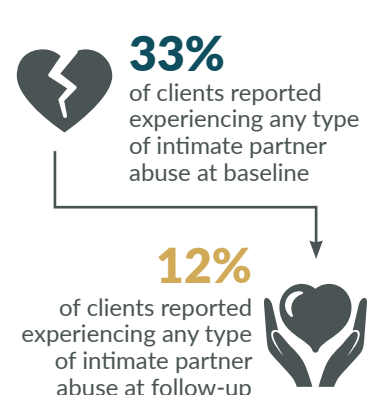
Substance Use



Mental Health



Intimate Partner Violence



^b 6 months before pregnancy compared to the past 6 months at postnatal follow-up